

PACO



AUTHORIZED DEALER



FOR SALES & SERVICE

1-800-287-1538 • tdmgo.com

*Single Stage
Double Suction
Split Case Pumps*

Paco Pumps One Step Ahead for Over 90 Years

Paco (Pacific Pumping Company) has over 75 years of experience in the design, manufacture, and application of centrifugal pumps and pumping systems.

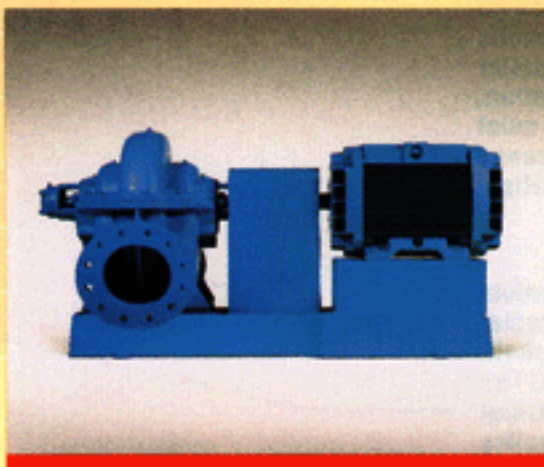


Paco's commitment to state-of-the-art pump design assures maximum user benefits with minimum life cycle cost.

Paco's experience plus their commitment to quality and an aggressive research and development program, has produced the latest development in split case pumps, the KP series. Using computer aided design technology, Paco has developed an energy efficient, longer lasting double suction split case pump with emphasis on ease of maintenance and installation.

The Paco KP series double suction split case pumps are available in sizes through 10" discharge, developing flows to 7000 GPM and heads to 500'. The KP models are available in a variety of metallurgies and mechanical configurations to meet your specific requirements.

Paco's commitment to their customers continues through an extensive service organization. Highly trained technicians can assist customers with initial start up, troubleshooting, repair, and system analysis.

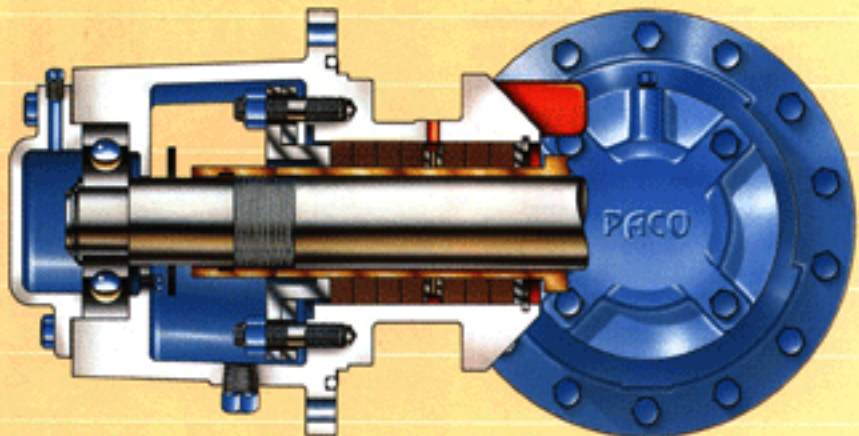


Features and Benefits

DOUBLE VOLUTE CONSTRUCTION: Paco's compensated double volute design virtually eliminates radial loads by balancing the hydraulic forces of the liquid within the pump casing. This balancing feature extends seal and bearing life, minimizes vibration and provides quiet operation. The double volute design improves efficiency by providing two individual volute passageways to guide the flow in the casing. Double volute construction is available on selected pumps ranging above 4" discharge.



BEARING HOUSING: Paco's unique self-contained bearing housing is attached to the upper and lower portions of the casing by a full 360 degree machined registered and bolted fit to optimize alignment and bearing life. This compact design limits shaft deflection by providing rigid shaft support. The combination bearing housing/seal chamber provides ease in maintenance and allows inspection of seals, sleeves and bearings without removing the top casing half.



IMPELLER: Paco's pump uses a Francis Vane impeller design specifically matched to the casing to produce broad band high efficiency and low NPSH. The hydraulically balanced double suction impeller, along with balanced radial loads provides quiet performance, minimum vibration and reduced operating costs.



90 Years of Experience

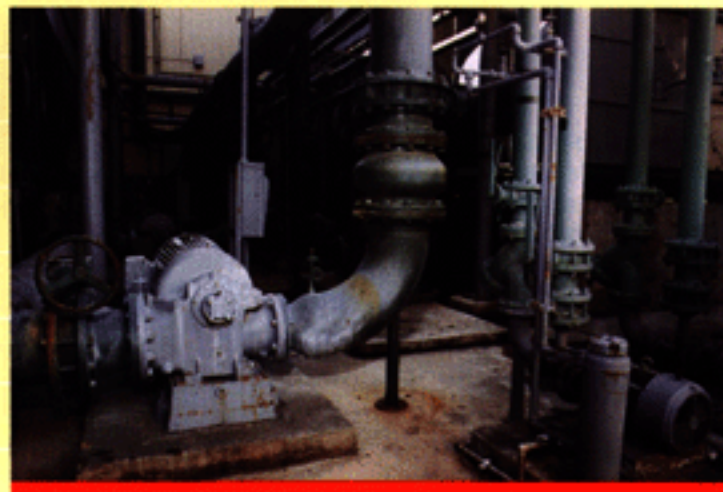
**COMMERCIAL HVAC SYSTEM
INSTALLATION:** Vertical split case
pumps provide chilled water in a
central mechanical equipment room
for a high rise bank. 150 HP pumps
operate 24 hours a day (when
required) with 215 pound suction
pressure to meet a variety of
weather conditions and heat loads.



FILTRATION SYSTEM: Supplying filter
water for the 1984 Olympics required
a rugged and dependable pump.
Paco all bronze KPVs pumps
provided the reliability that was
needed. The vertical configuration
helped reduce the size of the
mechanical equipment room.



PROCESS SYSTEM: Horizontal split
case pumps provide process cooling
water for this major customer. Energy
efficient operation and mechanical
reliability were major considerations
for this critical application.



Engineered and Tested for Quality Assurance



QUALITY CONTROL: Ongoing quality assurance/control is essential to maintain product reliability. Here, a Quality Control inspector measures a critical point of the pump volute. Hydrostatic tests are performed in accordance with Hydraulic Institute Standards.



ENGINEERING: Research and development engineers use computer aided design to predict pump performance and efficiency values. CAD results are confirmed by actual tests.



TEST LAB: Rigorous prototype testing is conducted to verify hydraulic performance, NPSH requirements as well as vibration and noise. These tests are conducted in strict accordance with Hydraulic Institute Standards. Ongoing production testing assures actual production units meet published performance. Instruments are calibrated and traceable to the U.S. Bureau of Standards.

KP: CASE WORKING PRESSURE LIMITATIONS AT 150° F: FLAT-FACE FLANGES

CASING MATERIAL	125/150 LB FLANGE DRILLING		250/300 LB FLANGE DRILLING	
	CWP (1)	HYDRO (2)	CWP (1)	HYDRO (2)
Cast Iron (ASTM A48)	175 psi	265 psi	300 psi	450 psi
Ductile Iron (ASTM A536)	175 psi	265 psi	450 psi	600 psi
All Bronze (ASTM B145)	175 psi	265 psi	250 psi	375 psi

(1) CWP = Case Working Pressure (2) Hydro = Hydrostatic Test Pressure

GENERAL INFORMATION

	PUMP MODEL NUMBER					
	2095-1,2 2013-5,6 3095-7,8	3014-5,6 4012-1,2 4012-7,8 4015-5,6	5012-7,8 5015-7,8 6012-1,2 6012-3,4	6015-1,2 6012-5,6 8015-3,4 1012-9,0	6019-3,4 8018-5,6	1015-1,2
Nominal case thickness, min	¾"	¾"	½"	½"	½"	¾"
Shaft diameter at impeller (max. diameter)	1½"	1½"	1½"	2½"	2½"	3"
Shaft diameter at sleeve	1"	1½"	1½"	1¾"	2¾"	2¾"
Shaft diameter at coupling	1"	1½"	1½"	1¾"	2"	2¼"
Sleeve O.D.	1¼"	1¾"	1¾"	2¼"	2¾"	3"
Packing box I.D.	1¾"	2½"	2½"	3¼"	3¼"	4"
Packing box depth	1¾"	2¾"	2¾"	4¼"	4¼"	4"
Packing size	¼"	¾"	¾"	½"	½"	½"
No. of packings rings, with lantern ring (per packing box)	5	5	5	7	7	6
Lantern ring width	¾"	¾"	¾"	¾"	¾"	¾"
No. of rings w/o lantern ring (per packing box)	6	6	6	8	8	7
No. of rings in front of lantern ring (per packing box)	2	2	2	2	2	2
Seal O.D.	1½"	2¾"	2¾"	2¾"	3½"	3¾"
Basic bearing number, cplg. -end	305	308	308	407	211	312
Basic bearing number, opp. -cplg. -end	305	308	308	309	211	312
Minimum bearing life	5 years	10 years	10 years	10 years	10 years	10 years
Maximum shaft deflection at seal	.002"	.001"	.0015"	.0015"	.0015"	.001"
1st two digits of pump model no. = Pump Discharge size; last two digits = impeller size (Example: 2095 = 2" pump, 9.5" impeller)						

*No Sleeve when seal type

BEARING CENTERS DISTANCE (INCHES) BY MODEL NUMBER

MODEL NUMBER	BEARING CENTER	
	PACKED	SEALED
2095-1,2 2013-5,6 3095-7,8	15.25"	12.5"
3014-5,6 4012-7,8 4012-1,2 4015-5,6	20.5"	16.5"
6012-1,2	21.5"	17.5"
5012-7,9	23.5"	23.5"

MODEL NUMBER	BEARING CENTER	
	PACKED	SEALED
5015-9,0 6012-3,4	24.5"	24.5"
6015-1,2 8012-5,6	28.6"	28.6"
6019-3,4 8018-5,6	26"	26"
8015-3,4	29.5"	29.5"
1012-9,0	30.5"	30.5"
1015-1,2	30"	30"

[illegible]

Paco Sales and Service Centers

Central Regional Sales Office

902 14th Street
Silvis, IL 61282
(309)792-9900
Fax: (309)792-8621

Dallas

4677 Mint Way
Dallas, TX 75236
(214)339-3156
Fax: (214)330-4482

Pomona

3215 Producer Way
Pomona, CA 91768
(909)594-9959
Fax: (909)594-1335

East Regional Sales Office

2 Bourbon Street
Peabody, MA 01960
(978)535-8000
Fax: (978)535-8142

Oakland

845 92nd Avenue
Oakland, CA 94603
(510)639-3200
Fax: (510)639-3337

Portland

2551 N.W. 30th
Portland, OR 97210
(503)224-6330
Fax: (503)241-0399

Sacramento

1331 "T" Street, Suite 20
Sacramento, CA 95814
(916)443-2412
Fax: (916)443-1145

San Diego

9245 Dowdy Drive, Suite 207
San Diego, CA 92126
(619)536-7999
Fax: (619)536-9595

Seattle

3215 South 116th Street
Seattle, WA 98168
(206)433-2600
Fax: (206)433-0263

West/Southwest Regional Sales Office

800 Koomey Road
Brookshire, TX 77423
(281)934-6279
Fax: (281)934-6082

Pacific Rim

Pasir Panjang Distripark Bldg. 1#02-20
Pasir Panjang Road
Singapore 118480
Tel: (65)278-1650 Fax: (65)274-0296



PACO Pumps • 800 Koomey Road • Brookshire, TX 77423-8803
(281) 934-6012 or (800) 955-5847
Fax: (281) 934-6090 or (800) 945-4777

AUTHORIZED DEALER



FOR SALES & SERVICE

1-800-287-1538 • tdmgo.com